

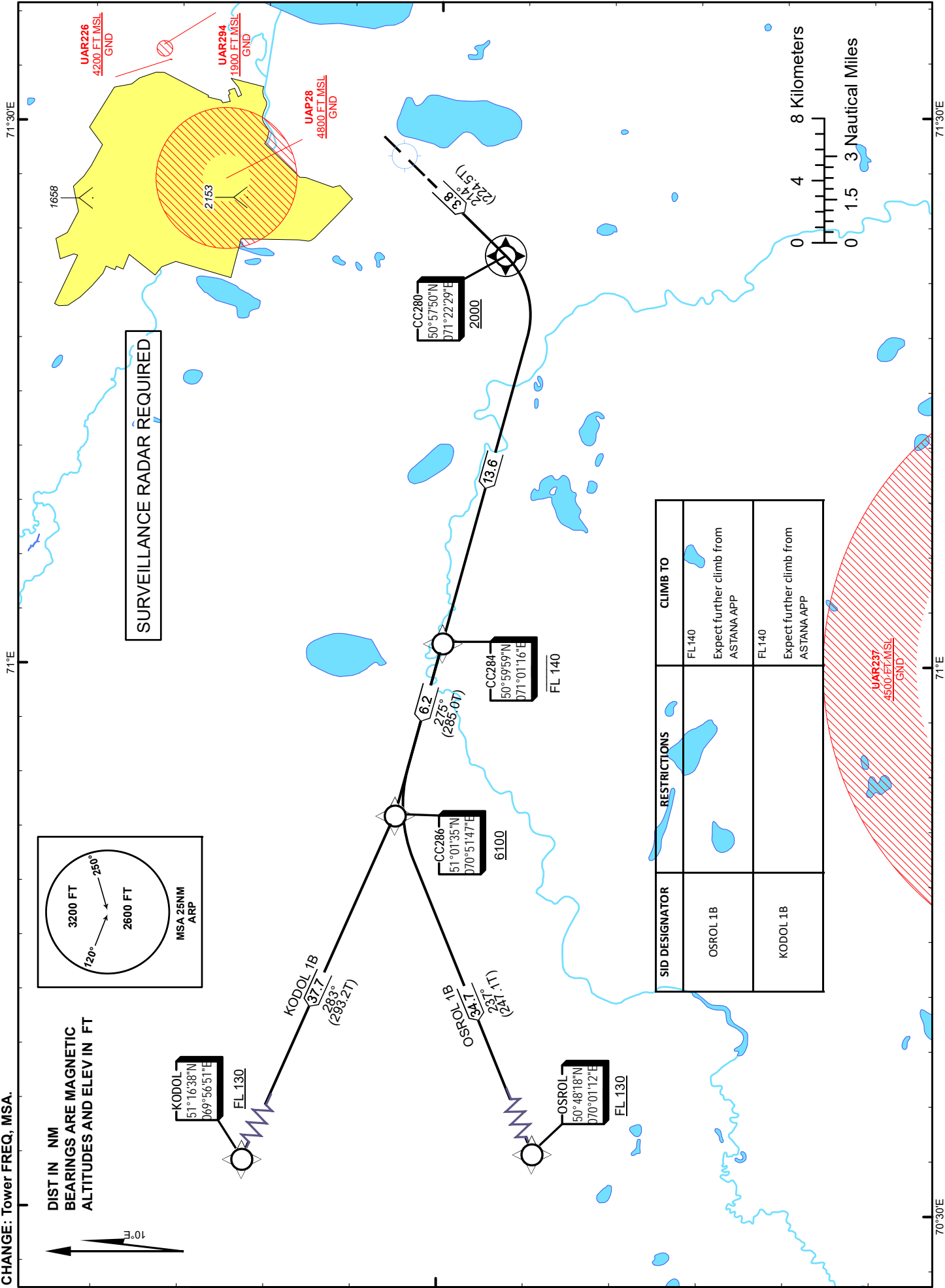
STANDARD DEPARTURE
CHART - INSTRUMENT
(SID) - ICAO

TRANSITION ALTITUDE
10000 FT

ASTANA TOWER 135.5
ASTANA APPROACH 124.6
ASTANA RADAR 120.7
ASTANA ATIS(EN) 129.5
ASTANA ATIS(RU) 128.3

KODOL 1B, OSROL 1B
(RNAV 1 SID BASED ON GNSS)

ASTANA
NURSULTAN NAZARBAYEV
INTERNATIONAL AIRPORT
RWY 22



TABULAR DESCRIPTION

KODOL 1B RWY22											
Serial Number	Path Descriptor	Waypoint Identifier	Fly - over	Course °M(°T)	Magnetic Variation(°)	Distance NM	Turn Direction	Altitude FT	Speed KT	VPA (°)	Navigation Specification
10	CF	CC280	Y	214(224.5)	10	3.8	-	+2000	-250	1.9	RNAV1
20	DF	CC284	-		10	13.6	R	-FL140		1.9	RNAV1
30	TF	CC286	-	275(285)	10	6.2	-	+6100		1.9	RNAV1
40	TF	KODOL	-	283(293.2)	10	37.7	R	+FL130		1.9	RNAV1

WAYPOINT LIST

KODOL 1B		
Waypoint Identifier	Coordinates	
DER	510031.69N	0712641.10E
CC280	505750.12N	0712229.36E
CC284	505958.63N	0710115.98E
CC286	510135.47N	0705147.21E
KODOL	511638.00N	0695651.00E

TABULAR DESCRIPTION

OSROL 1B RWY22											
Serial Number	Path Descriptor	Waypoint Identifier	Fly - over	Course °M(°T)	Magnetic Variation(°)	Distance NM	Turn Direction	Altitude FT	Speed KT	VPA (°)	Navigation Specification
10	CF	CC280	Y	214(224.5)	10	3.8	-	+2000	-250	1.9	RNAV1
20	DF	CC284	-		10	13.6	R	-FL140		1.9	RNAV1
30	TF	CC286	-	275(285)	10	6.2	-	+6100		1.9	RNAV1
40	TF	OSROL	-	237(247.1)	10	34.7	L	+FL130		1.9	RNAV1

WAYPOINT LIST

OSROL 1B		
Waypoint Identifier	Coordinates	
DER	510031.69N	0712641.10E
CC280	505750.12N	0712229.36E
CC284	505958.63N	0710115.98E
CC286	510135.47N	0705147.21E
OSROL	504818.00N	0700112.00E